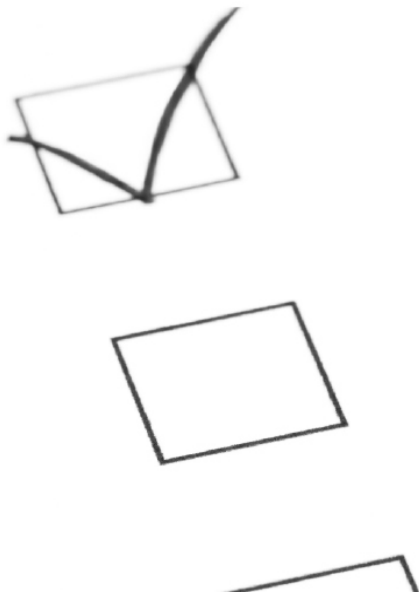


2011 CALA BIENNIAL ASSESSOR TRAINING

Risk Based Accreditation

Cathy Wylie

March 28-29, 2011



Building Laboratory
Excellence

Vers l'excellence
dans les laboratoires



Agenda

- Why is CALA exploring Risk-based Accreditation?
- What is Risk-based Accreditation?
- Brainstorming
 - Pros
 - Cons
 - Barriers
 - Risks

Why is CALA exploring Risk-based Accreditation?

- CALA Board of Directors asked CALA staff to look at the concept of implementing a Risk-based Accreditation
- Part of strategic plan

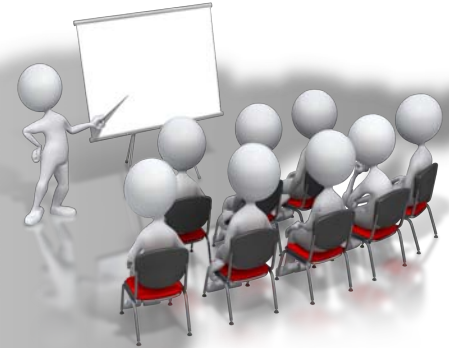
Timeline



Biennial meeting
Stakeholder input



Board of Directors
Decision to proceed to next step



March 2013
Biennial training – Assessors trained

Sept 2010

March 2011

June 2011

Dec. 2011

Dec. 2012

March 2013

Define and approve term “risk-based accreditation”



June 8, 2011
AGM stakeholder input



December 2012
Pilots complete



BOD approved definition

Risk-Based Accreditation is a process whereby a laboratory's past performance is used to determine the rigour of subsequent site visits.